



User Guide

Applicable Models:

- Datatool TrakKING Adventure
- BMW TrakKING Adventure

Contents

Page

2.	Contents
3.	Welcome
3.	Applicable Products
3.	Product Overview
4.	Updating Your Contact Information
4.	Monitoring Subscription
5.	In the Event of a Theft
5.	In the Event of a Theft with Keys
5.	Installation Certificate
6.	Vehicle Service & Overseas Travel
6.	Alert Options
6.	Early Warning Movement Text Alerts
7.	Dashboard Alerts (Low Battery, Ignition On & Idle Time Alerts)
9.	Journey History Reporting
11.	G Sense Impact Detection
11.	Troubleshooting
12.	Internal Battery Replacement
12.	Warranty
12.	Terms & Conditions of Service

Datatool is a brand of **Scorpion Automotive Ltd**
Scorpion House, Drumhead Road, Chorley, Lancashire, PR6 7DE.

Web: www.datatool.co.uk Facebook: DatatoolUK Twitter: @Datatool



Welcome

Thank you for purchasing a Datatool TrakKING Adventure vehicle tracking device. Within this user guide you will find all of the relevant information to ensure your tracking device provides you with the upmost security and length of service.

Datatool is a brand of Scorpion Automotive Ltd, a UK based provider of automotive security since 1973.

Applicable Products

This user guide covers the **Datatool TrakKING Adventure** – a stolen vehicle tracking system approved to the standards laid down by Thatcham Research, the provider of standards to the UK Insurance Industry. This user guide covers the theft protection and day to day usage of Datatool TrakKING Adventure.

Product Overview

Datatool TrakKING Adventure is a stolen vehicle tracking device which is covertly mounted on your motorcycle or scooter in order to early warning of vehicle movement via SMS text message and to provide the Police with the vehicle's location in the event of a theft. The early warning SMS text message is optional and may be armed/disarmed via the Datatool TrakKING Adventure website.

In order to provide this service, TrakKING Adventure utilises the GPS and GLONASS satellite location networks to accurately identify the vehicle location and transmit this location back to the TrakKING Control Centre using the GSM mobile data network. This TrakKING Team will share 'live' information with the Police as to the vehicle's location and other information that will aid in the vehicle's recovery.

Your TrakKING Adventure device arms automatically when the ignition is switched off and monitors the vehicle for signs of unauthorised movement. If the optional early warning text alert service is activated, at the first sign of movement the TrakKING Adventure unit will send you a text to alert you to a possible theft in progress. In the event that the vehicle is moved more than 150m without the ignition being turned on or the vehicle battery is disconnected, the TrakKING system will generate an alert to notify the TrakKING Monitoring Team of a potential theft and they will call you to verify whether a theft is in progress.

TrakKING Adventure disarms instantly when the ignition is switched on, unless an alert has been generated.

Please note: If your keys are stolen and your vehicle is subsequently taken, the TrakKING Adventure system will not generate an automatic alert. In this instance you will need to call the Control Centre to notify them of the theft and the TrakKING monitoring staff will remotely activate the alert mode.

Please see the 'In the Event of a Theft' Section for full details.

Updating Your Contact Information

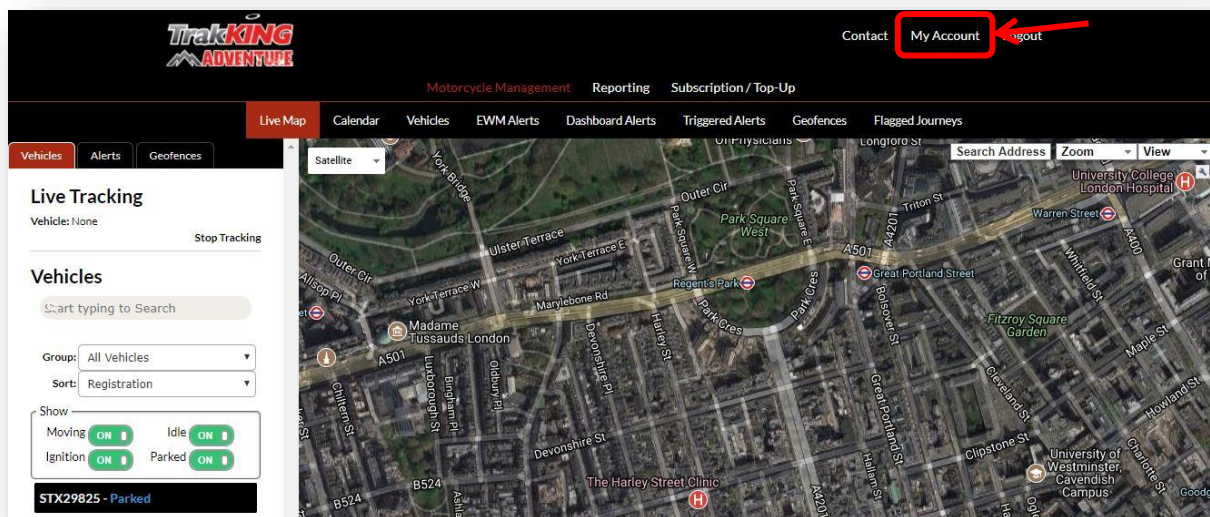
It is vitally important that your contact details are kept updated on the TrakKING Adventure system, to ensure the TrakKING Monitoring Team are able to contact you at any time of the day or night without delay should an alert be generated for your vehicle.

As part of the installation routine you should have received an email containing a user name and password which provides you access to the TrakKING Adventure website (<http://adventure.trakking.net>) If you have not received this email or require a duplicate please call the TrakKING Helpdesk on 01257 249928.

At the earliest opportunity please log in to the TrakKING Adventure website and check the contact information provided by your installer is correct and add any additional telephone numbers along with an emergency contact whom the TrakKING staff can call if you are not available. Please ensure sufficient numbers are provided to allow 24 hour contact. A landline number in addition to a mobile number is essential.

Whilst logged in to the TrakKING Adventure website, please also update the security question which will be used to verify your identity when if you need to contact the TrakKING Control Centre or in the event of a vehicle theft.

These details can be updated by clicking on the 'My Account' link within the website once logged in:



Monitoring Subscription

Datatool TrakKING is a monitored service with staff available 24 hours a day, 365 days a years to support you in the event of a vehicle theft. There is an annual fee payable for this service and its current pricing can be found on the TrakKING Adventure website.

The subscription payment can be made online via the website or over the phone by calling the Subscription Team on 01257 249928.

Datatool TrakKING Adventure will only provide theft detection whilst the monitoring subscription is active. If the subscription payment is not received or not renewed, no alerts will be generated and your vehicle theft protection will not be in place. If you have declared the fitment of the tracking system to your insurer, non-payment of the monitoring subscription may also impact negatively on your insurance cover in the event of a theft.

In the Event of a Theft

Datatool TrakKING Adventure will generate an automatic alert to the Control Centre if any of the following are detected:

- Vehicle moved more than 150m from last known position without the ignition being switched on
- Vehicle battery disconnected (including disconnection of tracking system from vehicle)
- Vehicle moves without consistent GPS signal

Upon receipt of an alert the TrakKING Monitoring Team will attempt to contact the vehicle owner using the contact information provided and ask them to verify a theft is in progress. Repeated attempts will be made to contact the owner and/or designated emergency contact via telephone and SMS text message.

If the vehicle owner confirms the vehicle is stolen, the owner will be asked to contact their local Police force to obtain a Crime Reference Number whilst the TrakKING Monitoring Team will continue to track the vehicle. Once the Crime Reference Number has been relayed to the TrakKING Monitoring Team by the owner, the Team will contact the Police and assist the Police in recovering the vehicle. When a vehicle is confirmed as stolen, the owners' access to the TrakKING Adventure website will be restricted and the vehicle location information will only be given to the Police.

In the Event of a Theft with Keys

If the vehicle keys are stolen and the vehicle subsequently driven away, Datatool TrakKING Adventure will not generate an automatic alert. In this instance the vehicle owner should first contact the Police to obtain a Crime Reference Number and then contact the TrakKING Theft Line on 01257 240945. The TrakKING Monitoring Team will then remotely activate the alert condition and liaise with the Police to attempt recovery.

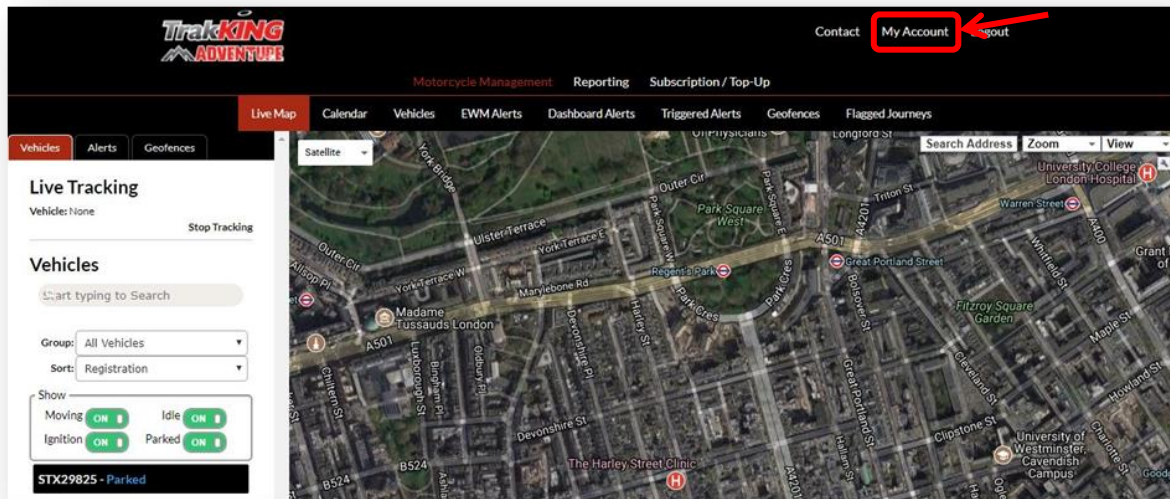
Please note: The TrakKING Monitoring Team will use their best efforts to recover your vehicle, working with the relevant Police Authority. The Police response to a reported vehicle theft may vary depending on the resources available and the availability of location data from the tracking unit. Most recoveries happen within the first 2 hours of theft but every theft is different and the recovery may take much longer or not even be possible. The fitment of a tracking system does not guarantee recovery of a stolen vehicle but does significantly increase the possibility. The normal precautionary measures such as utilising secondary security, parking in well-lit areas and securing the keys should still be taken.

Installation Certificate

As an insurance industry approved product, Datatool TrakKING may qualify the owner for a discount on their motorcycle or scooter insurance. If the insurer requires an installation certificate as proof of fitment a copy may be downloaded from the 'Certificate' link on the top menu of the TrakKING website. The certificate is only available once the monitoring subscription has been paid and activated.

Vehicle Servicing & Overseas Travel

To minimise the possibility of false alerts, the TrakKING Adventure website provides the facility for the vehicle owner to notify the TrakKING staff with details of any planned vehicle servicing, which may involve removal of the vehicle battery, transportation by trailer or van, or travel by ferry which may also trigger an alert. In this event, simply log in to the TrakKING Adventure website, click on the “Contact” link and complete the provided form:



Datatool TrakKING Adventure provides coverage in Western Europe as a minimum. If you are taking your vehicle outside of Western Europe please contact the TrakKING Help Desk for a list of countries where the TrakKING Adventure will be operational. The Help Desk contact number is 01257 249928.

Alert Options

TrakKING Adventure offers 2 different types of alerts, known as Early Warning Movement Alerts and Dashboard Alerts. The Early Warning Movement Alerts are SMS text messages that come direct from the TrakKING Adventure unit to your specified mobile phone. The Dashboard Alerts are email notifications of events reported by the unit to the server. The Dashboard Alerts are fully customisable to suit the user's requirements, please see below.

Early Warning Movement Text Alerts

Datatool TrakKING Adventure is designed to monitor the vehicle for signs of unauthorised movement. As a user option, it is possible to have the unit send an SMS text message at the first sign of vehicle movement, before the vehicle moves away from where it was parked.

To activate /deactivate the Early Warning Movement Text alerts, log in to the TrakKING Adventure website and click on the 'EWM Alerts' tab from the Live Map screen, this will take you to the Early Warning Movement Text Alerts page:

TrakKING ADVENTURE Contact My Account Logout

Motorcycle Management Reporting Subscription / Top-Up

Live Map Calendar Vehicles **EWM Alerts** Dashboard Alerts Triggered Alerts Geofences Flagged Journeys

Early Warning Movement Text Alerts

An Early Warning Movement text alert is sent to your designated mobile number when your motorcycle detects movement for several seconds.

No.	Registration / Alias	EWM Alerts	Phone Number	Free Texts	Paid Texts	Action
1	STX29825	On	+447855787	1	31	Top Up Disable

From the EWM Alerts page you can arm / disarm the text alerts, change the allocated text alert phone number and purchase additional texts if required. Please note if it is more than 30 minutes since the vehicle was last used, changes made via the website will be transmitted to the TrakKING Adventure unit the next time the vehicle ignition is activated or the tracking unit detects movement for more than 6 seconds.

5 texts per month are included as part of your monitoring subscription, if you would like to purchase additional texts they can be purchased in bundles of 100. Please click the 'SMS Top Up' link to purchase online.

Dashboard Alerts

Low Battery Alert

TrakKING Adventure monitors the condition of the vehicle battery and if required will send a 'Low Battery Warning' email direct to the vehicle owner when the vehicle battery drops below a predetermined level. If you receive the email warning it is important that you take action to recharge the vehicle battery.

To activate the low battery notification, log in to your TrakKING Adventure account, navigate to the Dashboard Alerts page and click to 'Create Alert':

TrakKING ADVENTURE Contact My Account Logout

Motorcycle Management Reporting Subscription / Top-Up

Live Map Calendar Vehicles EWM Alerts **Dashboard Alerts** Triggered Alerts Geofences Flagged Journeys

Dashboard Alerts


This section lists all the alerts that have been previously created. It also allows you create a new alert or modify the existing alerts. Once an alert has been created it is possible to assign motorcycles or groups of motorcycles to that alert. By default when an alert is first created it is assigned to all vehicles. An alert can be configured to notify users via email when it is triggered.

Create Alert

☒ Alert Name ☐ Alert Type ☐ Description

Name	Type	Description	Assigned Vehicles	Email Notification	Actions
------	------	-------------	-------------------	--------------------	---------

To create the low battery warning alert, complete the fields on the web form as follows:


[Contact](#)
[My Account](#)
[Logout](#)

[Motorcycle Management](#)
[Reporting](#)
[Subscription / Top-Up](#)

[Live Map](#)
[Calendar](#)
[Vehicles](#)
[EWM Alerts](#)
[Dashboard Alerts](#)
[Triggered Alerts](#)
[Geofences](#)
[Flagged Journeys](#)

Create Alert

This form allows you to create and configure a new alert. Once an alert has been created you will be able to assign vehicles or a group of vehicles to the new alert. To view the online help information associated with each field click the question mark icon next to the section heading.

Alert Configuration

Enter a name for the alert
e.g. 'Low Battery Alert'

* Name:

* Level:

Description:

Add any descriptive text here e.g. 'Battery needs charging'.

Choose Alarm, Warning or Notice. The chosen level does not affect the notification but simply changes the icon displayed on the Live Map when the alert is triggered.

Alert Type

Choose 'Vehicle Battery Low'

Type:

Alert Actions

Email:

Enter the email address you require the low battery notification to be sent to. You can enter multiple email addresses by separating each address with a semi colon (;).

Alert Schedule

The Alert Schedule options determine when alerts are active. The default setting is at all times.

Timezone:

* Active:

Day	Start	End
Sunday:	<input type="text" value="00:00"/>	<input type="text" value="23:59"/>
Monday:	<input type="text" value="00:00"/>	<input type="text" value="23:59"/>
Tuesday:	<input type="text" value="00:00"/>	<input type="text" value="23:59"/>
Wednesday:	<input type="text" value="00:00"/>	<input type="text" value="23:59"/>
Thursday:	<input type="text" value="00:00"/>	<input type="text" value="23:59"/>
Friday:	<input type="text" value="00:00"/>	<input type="text" value="23:59"/>
Saturday:	<input type="text" value="00:00"/>	<input type="text" value="23:59"/>

Create Alert

The low battery alert will generate an email when there is approximately 20% capacity left in the vehicle battery, based on a standard lead acid battery.

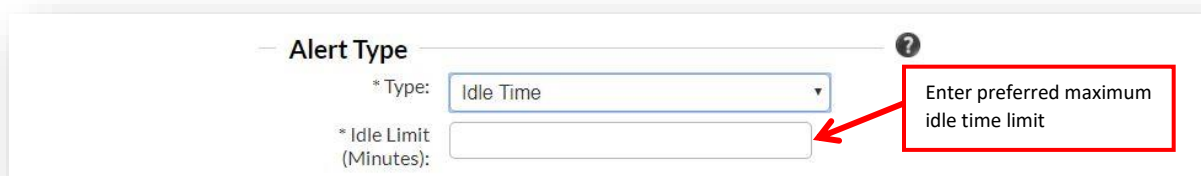
Ignition On Alert

TrakKING Adventure can also send an alert every time the motorcycle ignition is switched on, which may be useful when the bike is being stored away from home, or if you are on holiday and are concerned about theft with keys.

The process to create an 'Ignition On' alert is the same as creating the low battery alert above except the Alert Type should be set as 'Ignition' and the Alert Name and Description changed to reflect the type of alert you are creating.

Idle Time Alert

An idle time alert can be generated to send notification of when the motorcycle has been left idle with the engine running for longer than the specified period.

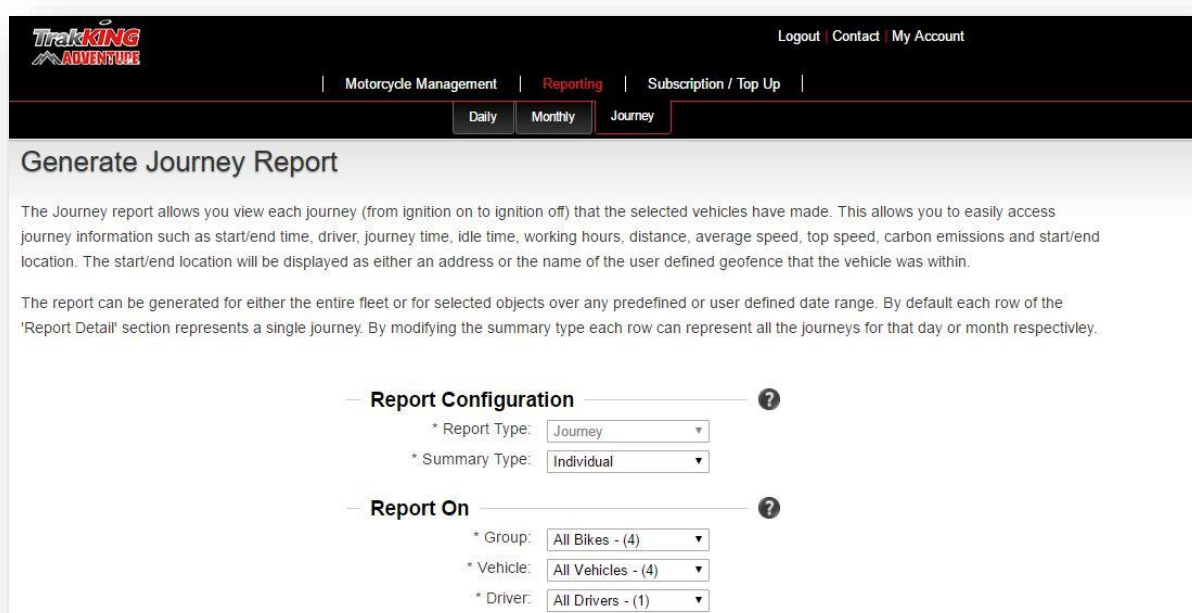


The screenshot shows a form titled 'Alert Type' with a dropdown menu set to 'Idle Time'. Below it is a field for '* Idle Limit (Minutes):'. A red box highlights this field with a red arrow pointing to it, and a text label 'Enter preferred maximum idle time limit'.

Simply create the alert in the same manner as the low battery alert and enter the idle time limit at which you prefer to be notified. This feature is intended to be of use to hire operators and fleet users.

Journey History

In addition to the theft protection features, TrakKING Adventure provides comprehensive journey history reporting with your journey data being uploaded to the cloud every 2 minutes. To access the journey history simply click on the 'Reporting' menu option from the Live Map screen:



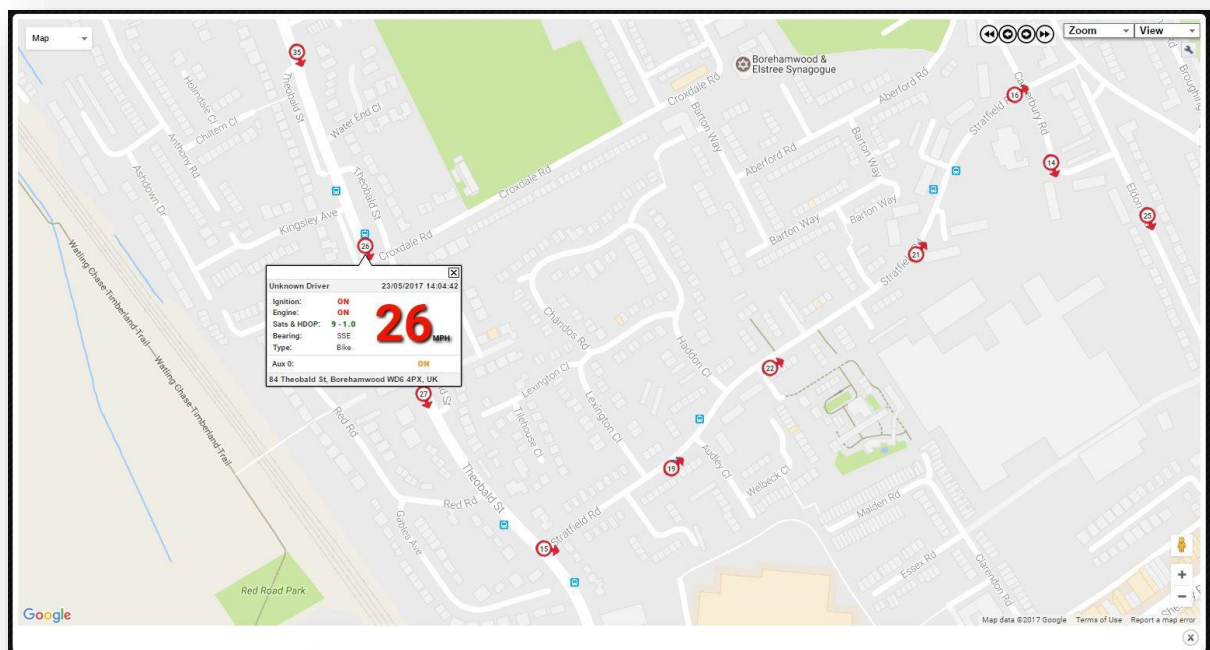
The screenshot shows the 'Generate Journey Report' page in the TrakKING Adventure interface. The page has a navigation bar with 'Motorcycle Management', 'Reporting', and 'Subscription / Top Up'. Below the navigation bar are tabs for 'Daily', 'Monthly', and 'Journey'. The main content area is titled 'Generate Journey Report' and contains a description of the report. Below the description is a 'Report Configuration' section with two dropdown menus: '* Report Type:' set to 'Journey' and '* Summary Type:' set to 'Individual'. Below this is a 'Report On' section with three dropdown menus: '* Group:' set to 'All Bikes - (4)', '* Vehicle:' set to 'All Vehicles - (4)', and '* Driver:' set to 'All Drivers - (1)'.

Choose the options from the Report menu to determine which vehicle(s) you wish to report on and the date range to produce a detailed journey history:

Wednesday 24/05/2017											
2017-05-24 18:17:34	View #153										22 Clapton Passage, London E5 8HS, UK
2017-05-24 18:22:59	Flagged Journey	UNKNOWN	5m, 25s	1m, 4s	4m, 21s	0.94 Mi	11.32 mph	29.39 mph	0.00 ltr	£0.00	0.00 kg
2017-05-24 18:25:34	View #154										Ferland House, London E5 9RP, UK
2017-05-24 18:32:18	Flagged Journey	UNKNOWN	6m, 44s	1m, 34s	5m, 10s	1.07 Mi	9.79 mph	27.94 mph	0.00 ltr	£0.00	0.00 kg
2017-05-24 19:29:16	View #155										Friends Chemist, 46 Lower Clapton Rd, London E5 0RN, UK
2017-05-24 19:30:40	Flagged Journey	UNKNOWN	1m, 24s	38s	46s	0.11 Mi	7.74 mph	22.68 mph	0.00 ltr	£0.00	0.00 kg
											21 Blurton Rd, London E5, UK

Click on the View link to display the journey on the map or satellite view

The map view displays the chosen journey with the speed and location recorded every 15 seconds. The display can be toggled from map view to satellite view and you can follow the journey in detail using the on screen arrows. Click on any map marker to view further detail.





TrakKING Adventure utilises the Google Maps interface so all of the normal Google Maps features such as Street View are available to you with your journey data displayed on the map.

The displaying of vehicle speed is optional, to toggle the speed display on or off visit the My Account page and click the 'Edit Map Markers' setting.



G Sense Impact Detection

Datatool TrakKING Adventure offers an optional impact detection facility called G Sense. G Sense continually monitors the movement of the vehicle and will trigger an SMS alert to your chosen Emergency Contact should the criteria that determines an accident be met. G Sense is intended to send an alert only if an incident occurs and the vehicle remains stationary after the incident and the ignition remains activated. If the vehicle is moved or the ignition is turned off an alert will not be generated.

It is recommended your nominated emergency contact is provided with access to your TrakKING Adventure account log in details to ensure they are able to locate your vehicle in the event of an alert being triggered.

To activate/deactivate G Sense or to update the Emergency Contact details visit the Vehicles page.

Troubleshooting

Datatool TrakKING Adventure contains no user serviceable parts and requires no regular maintenance. To verify your unit is operating correctly please log in to the TrakKING Adventure website and confirm the vehicle location is correctly shown on the map, the location is updated to the website every 2 minutes when the motorcycle ignition is on. If the vehicle location shown is incorrect please run the motorcycle outside for 4 minutes, if the location does not update in that time frame contact your supplying dealer at the earliest opportunity.

Internal Battery Replacement

In order for Datatool TrakKING to operate when the ignition is turned off or if the vehicle battery is removed, TrakKING contains a rechargeable battery. Under normal circumstances this battery is charged whilst the vehicle is in use. The battery has been specified to last a minimum of three years of average vehicle use. However as with all rechargeable batteries, the lifespan will vary depending on how the battery is maintained and it may be necessary for the battery to be replaced if the performance degrades.

If your vehicle is to be stored for a long period, we strongly recommend the use of a battery conditioner to keep the vehicle battery and therefore the tracking system battery in good condition. If the tracking unit internal battery is allowed to discharge completely the tracking unit may require replacement and this would not be considered a warrantable defect.

In the event of the internal battery suffering performance issues please contact your installing dealer for assistance.

Warranty

Datatool TrakKING is provided with a comprehensive 3 year warranty in addition to your statutory rights, designed to combat any material or manufacturing defects which become apparent within 3 calendar years from the date of first installation.

In the unlikely event of repairs being required under the provided warranty, please contact the installing dealer for assistance.

Terms & Conditions of Service

Use of the Datatool TrakKING system is subject to the Datatool TrakKING Terms & Conditions, details of which are available to download from the TrakKING website. We recommend you download and read a copy to gain a greater understanding of the provided service and the limitations of use.